

# PRODUCT DATA SHEET

## EXPORTADORA DE BERRIES WILSON CAMPOS SPA

**Dirección:** Baquedano 491, Linares, Chile

**Web:** [www.exportcampos.cl](http://www.exportcampos.cl)

**Email:** [info@exportcampos.cl](mailto:info@exportcampos.cl)



**Exportadora de Berries**  
Wilson Campos SpA



## IQF BOLETUS MUSHROOM CUBES

### PRODUCT OVERVIEW

#### Product Description:

Frozen product made from fresh Boletus mushrooms, processed into uniform cubes using IQF (Individual Quick Freezing) technology. Characterized by intense flavor and aroma, contains 80-90% water, lower percentage of proteins, minerals and vitamins, and 0% fat.

#### Key Features:

- **Market:** Export – Food Service & Retail
- **Shelf Life:** 24 months at -18°C (0°F)
- **Ingredients:** 100% mushrooms free of preservatives and artificial colorants
- **Variety:** Boletus
- **Harvest Season:** June – July
- **Origin:** Chile

#### Recommended Uses:

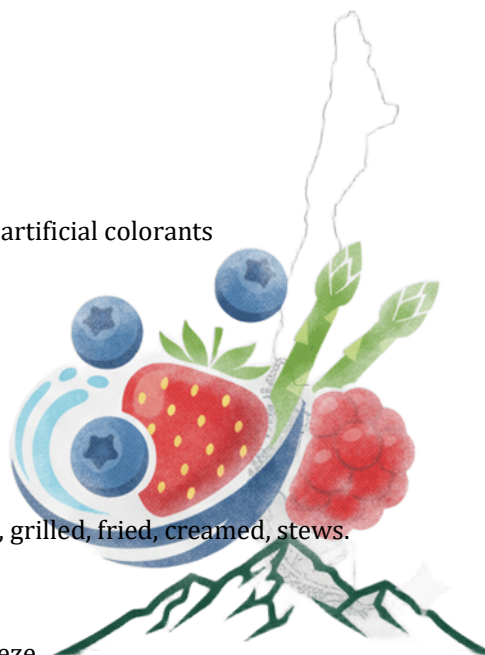
Specially prepared for consumption as: vegetarian meals, pizzas, grilled, fried, creamed, stews.

#### Storage Instructions:

Store at -18°C. Thaw once, consume within the day. Do not refreeze.

#### Health Resolution:

No. 167 of 21.02.2008 Maule



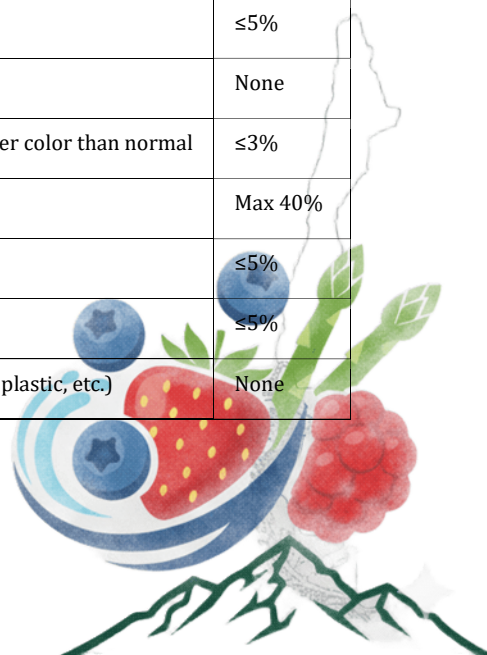
## ORGANOLEPTIC, PHYSICAL & CHEMICAL ANALYSIS

### Organoleptic Analysis (Sensory)

Attribute	Specification
Appearance	Fresh, clean and healthy products
Color	Practically uniform color characteristics of natural state
Aroma & Taste	Characteristic of fresh product with natural aroma and flavor

### Physical Analysis – Tolerance (500g sample)

Component	Description	Tolerance
Piece Size	According to customer requirement	Variable
Trimming	More than 1/3 of piece	≤5%
Dark Brown Trimming	Dark brown color	≤5%
Smaller Pieces	Less than 1 cm	≤5%
Oversized	Pieces of larger caliber	≤5%
Soil Presence	Pieces with soil	None
Oxidized/False Skin	Cubes with more intense and darker color than normal	≤3%
Free Water	Percentage of free water	Max 40%
Water Soaked	Pieces with water	≤5%
Blocks	Blocks of three or more units	≤5%
Foreign Material	Material foreign to product (glass, plastic, etc.)	None



## MICROBIOLOGICAL SPECIFICATIONS

Parameter	Max. Limit
Total Count	<100,000 CFU/g
E. coli	None
Salmonella (25g)	None
Heavy Metals	None

## NUTRITIONAL INFORMATION

**Per Serving:** 1/8 cup (85g approx.)

Nutrient	Per 100g
Energy	40 kcal
Protein	1.0 g
Total Carbohydrates	0.0 g
Total Fat	0.0 g

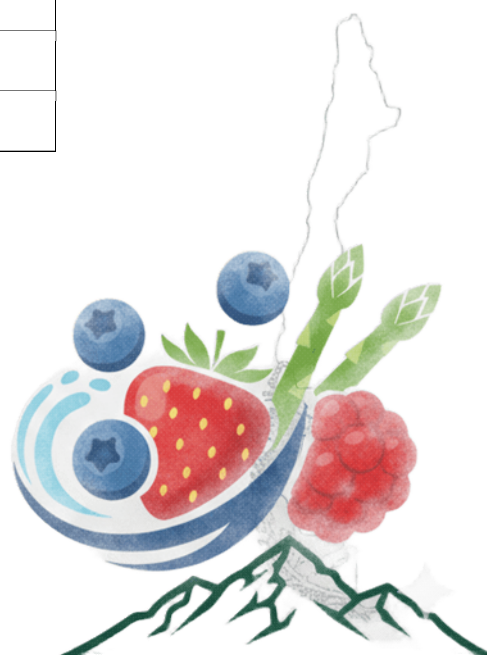
## PACKAGING

### Primary Packaging

- Blue polyethylene bag - 60 microns
- Format: 1 kg
- Sealing: Transparent
- Shelf life: 24 months from pack date

### Secondary Packaging

- Corrugated cardboard box - Dimensions 445x250x250, 30-CA sheet
- Format: 10 x 1 kg



- Box labeling: Product, format, pack date, expiry date, net weight, lot, company data

### **Quality Control**

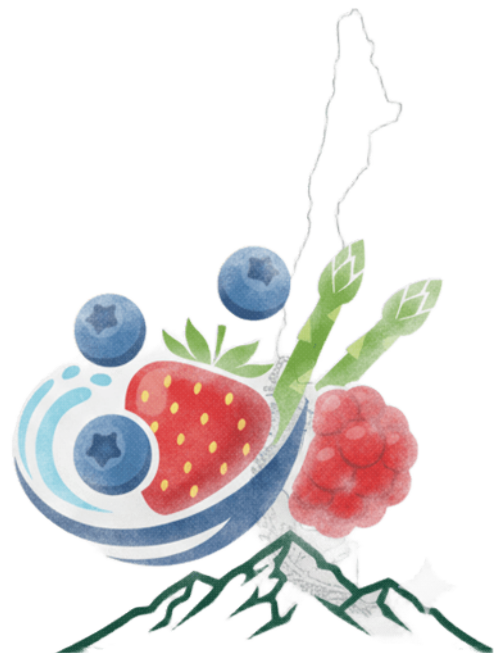
- Metal Detection: Finished product controlled by metal detector

### **CERTIFICATIONS & COMPLIANCE**

- ✓ GMO-Free: Contains no genetically modified organisms
- ✓ Allergen-Free: Product free of declarable allergens
- ✓ Additive-Free: 100% natural mushrooms without preservatives or colorants
- ✓ HACCP: Hazard Analysis Critical Control Points System
- ✓ Full Traceability: From harvest to export
- ✓ Metal Control: Metal detector in production line
- ✓ Health Resolution: Authorized by SEREMI Health of Maule

### **RECOMMENDED USES**

- Gourmet Gastronomy: High-end restaurants
- Vegetarian Meals: Base for vegetarian and vegan dishes
- Pizzerias: Premium ingredient for gourmet pizzas
- Grilling: Barbecue accompaniment
- Frying: Special fried preparations
- Creams & Sauces: Base for creamy sauces
- Stews: Main ingredient in casseroles
- Food Service: Catering and food services
- Gourmet Retail: Direct sale to premium consumers



## PRODUCT ADVANTAGES

- **Intense Flavor:** Characteristic Boletus aroma and taste
- **Low Calorie:** Only 40 kcal per 100g
- **Fat-Free:** 0% fat content
- **Culinary Versatility:** Multiple preparation methods
- **Ready to Use:** Uniform cubes ready for cooking
- **Premium Product:** High-quality gourmet mushroom
- **Long Conservation:** 24-month shelf life
- **IQF Process:** Maintains texture and original properties

## ADDITIONAL INFORMATION

### Nutritional Composition:

- 80-90% water
- Lower % protein
- Natural minerals and vitamins
- 0% fat

### Harvest Season:

Boletus mushrooms are harvested during June and July months, ensuring maximum quality and product freshness.

**Prepared by:** EXPORTADORA DE BERRIES WILSON CAMPOS SPA

**Issue Date:** September 2025

**Version:** 2.0

*Esta ficha técnica cumple con todos los estándares internacionales de calidad e inocuidad alimentaria para productos congelados de exportación.*

